



Polished

This light beige limestone has a uniform background composed of fine grains and brown fossils distributed along the surface of the stone.

Alternative Names: Cabeça Veada, Dunas, Semi-Rijo, Porto Bege



Honed



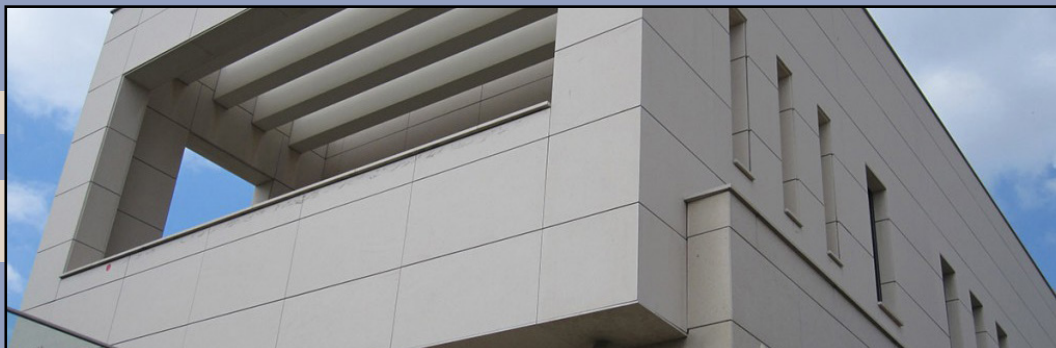
Brushed



Sandblasted



Hammered



Specifications	
Apparent Density	2450 KG/M3
Water Absorption (%)	3.10%
Open Porosity (%)	7.70%
Flexural Strength	11.40 MPA
Compression Resistance	85.10 MPA
Abrasion Resistance	20.50 MM
Reaction to Fire	Class A1
Frost Resistance	48 Freeze-Thaw Cycles